



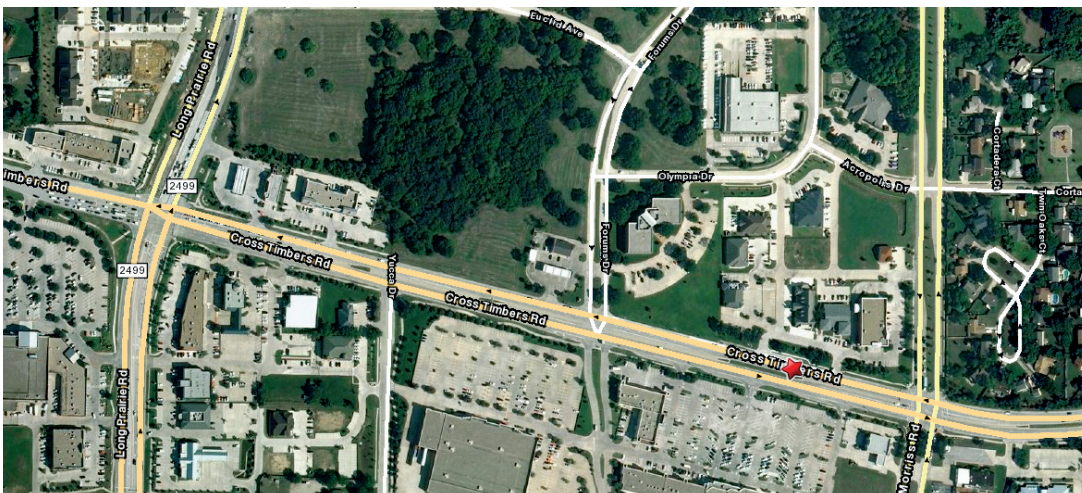
Office / Retail

SPACE for RENT

2800 sq ft of cold shell space with FM1171 Frontage and great signage as well.



- \$16.50 per sq ft base rent with \$17 psf finish out
- Minimum 1400 sq ft
- 1171 Frontage
- Perfect for Retail or Office use.
- Close to Restaurants, Pharmacy and other Retail anchors in Central Flower Mound
- Located in a fast growing area of Denton County



2260 Cross Timbers Road
Flower Mound, TX 75028

WEAVER
COMMERCIAL REAL ESTATE

for more information contact:

Todd Weaver
3505 Yucca Drive, Suite 100
Flower Mound, Texas 75028

todd@weavercommercial.com
469-635-2833 Office
469-635-2849 Fax